

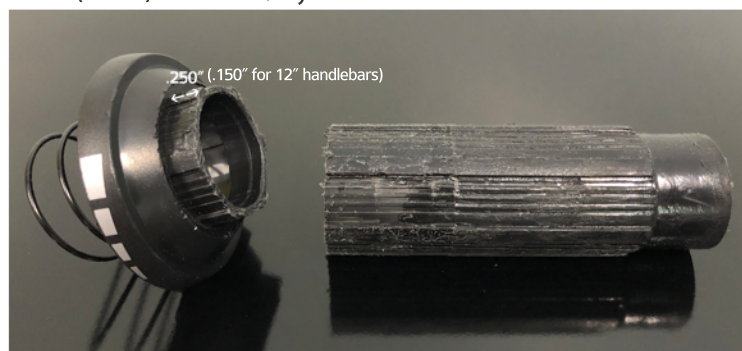
INSTALLATION INSTRUCTIONS

NOTE: Once you modify your stock throttle, you can't go back to the stock set up. Please modify your stock parts at your own risk.

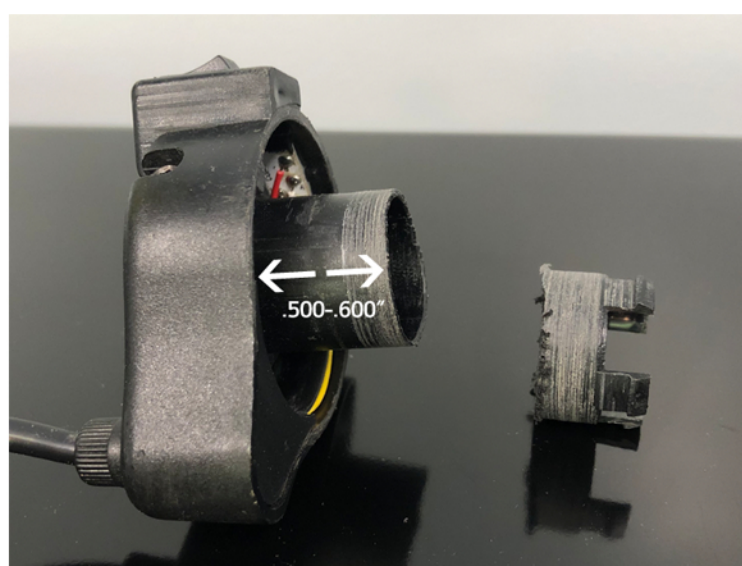
STEP 1: Remove the throttle assembly from the handlebars.

STEP 2: Remove the stock grip from the stock throttle tube.

STEP 3: Remove the stock throttle tube and cut it down to .25" (1/4") from the base for 16" Stacyc handlebars or .150" (5/32") for 12" Stacyc handlebars.



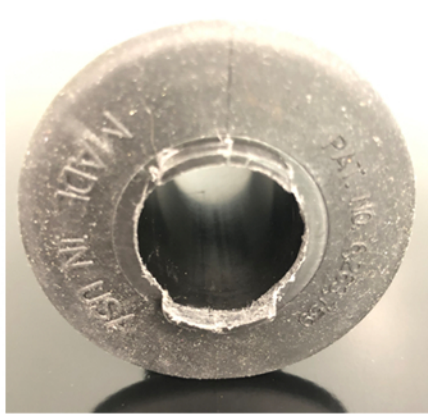
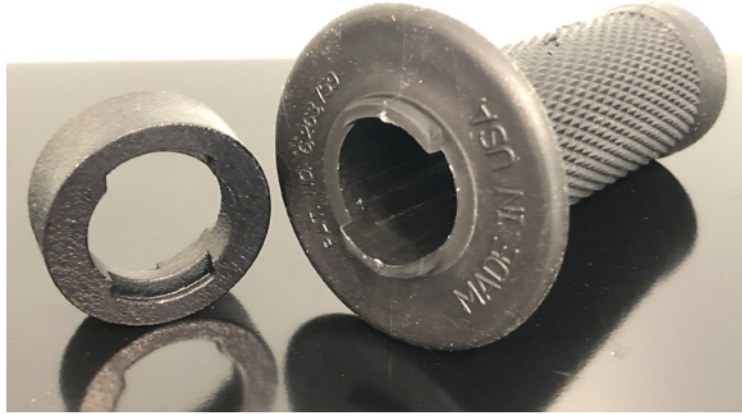
STEP 4: Cut the locking tabs off of the throttle assembly .500-.600" from the housing.



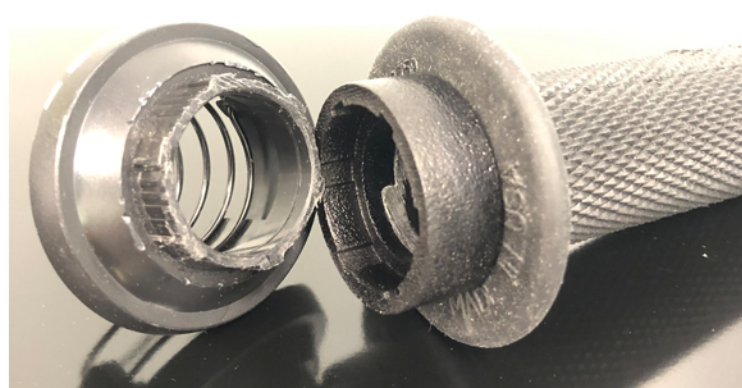
STEP 5: Cut the tabs off one outside end of only one of the ODI grips and sand smooth.



STEP 6: Install the adapter on the ODI grip that you cut the tabs off of the outside end and check to make sure it rotates smooth on the handlebars. If it has any resistance lightly sand the inside of the locking tabs and test again.

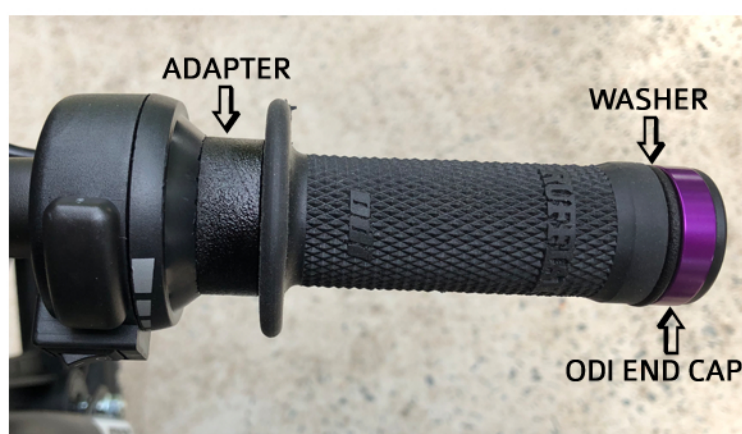


STEP 7: Install the adapter on to the cut down throttle tube.



STEP 8: Re-assemble the throttle tube to the throttle assembly the same way you took it apart.

STEP 9: Slide the throttle assembly back on the handlebars, then the washer, then the lock-on ODI end cap. Tighten the end cap first, then slide the throttle assembly against the end cap tight enough to remove most of the gaps but not too tight to pinch the throttle tube. Tighten the throttle housing. Check to make sure the throttle tube snaps back and does not stick, loosen the throttle housing and adjust if needed.



STEP 9: Occasionally check to make sure the throttle tube does not stick and snaps back correctly, especially after crashes or tip overs. Adjust throttle housing tension if needed.